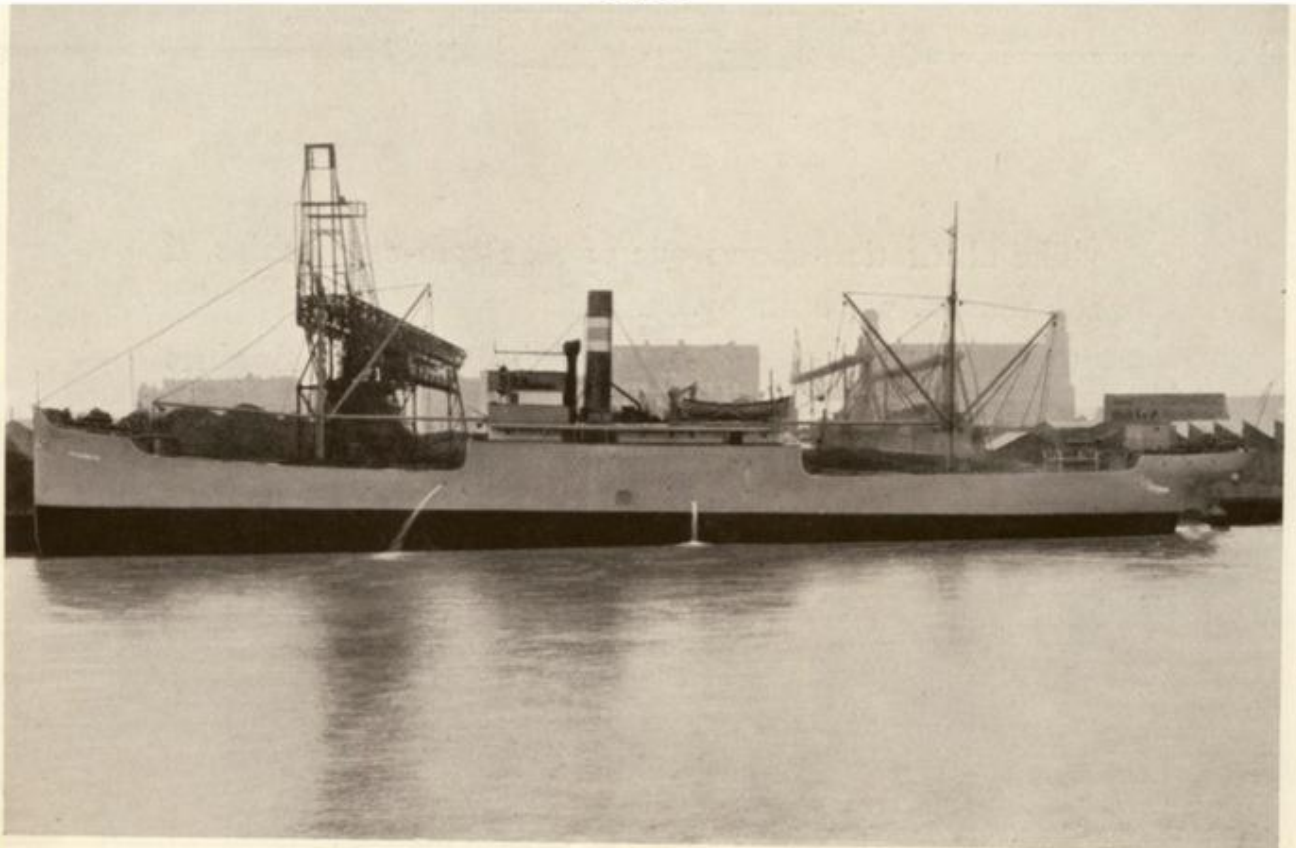


**Lastfartyget S/S Ardennia (nr  
139, 1921)**

The illustration shows one of the steam-cargo-ships of 2600 tons d. w., built by us.

Above named ship is equipped with Triple-Expansion-Engines, 800 I.H.P., of our own make.

**Kommentar:** Fart. b.nr 139, S/S Ardennia, Lastfartyg – ca 2600 dw  
Levererat 1921 till Föreningen Ångf. AB Göthe, Göteborg / BoN



*Steam-cargo-ship of 2600 tons d. w.*

Kockums: "The illustration shows one of the steam-cargo-ships of 2600 tonns d. w., built by us. Above named ship is equipped with Triple-Expansion-Engines, 800 I.H.P., of our own make."

## Snabba fakta

- Nr: 139
- Art: s.s
- Namn: Ardennia
- Typ: Lastfart
- Dw ton/Depl ton: 2500 dw
- Levererad 1921
- Beställare: Förenade Ångfartyg AB Götha, Göteborg