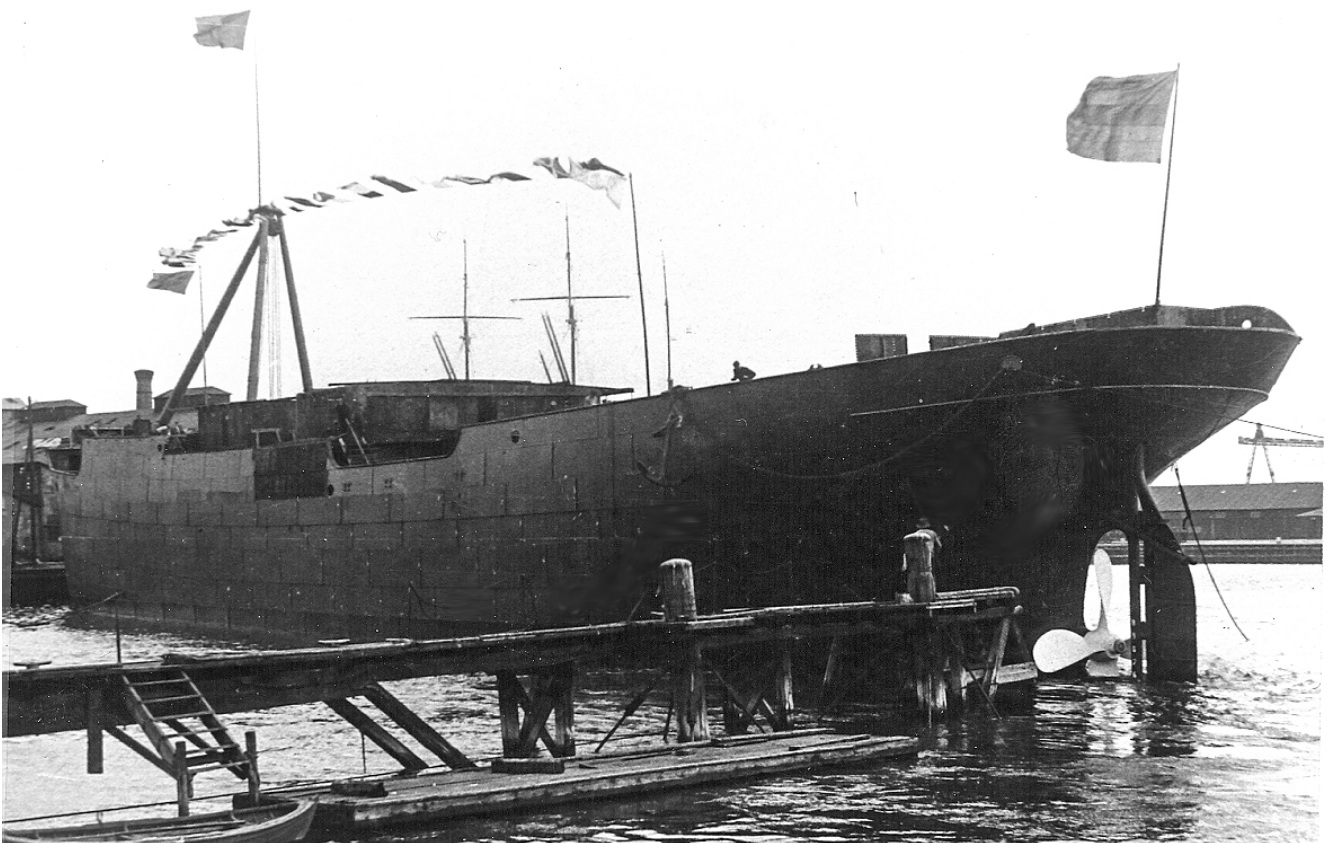


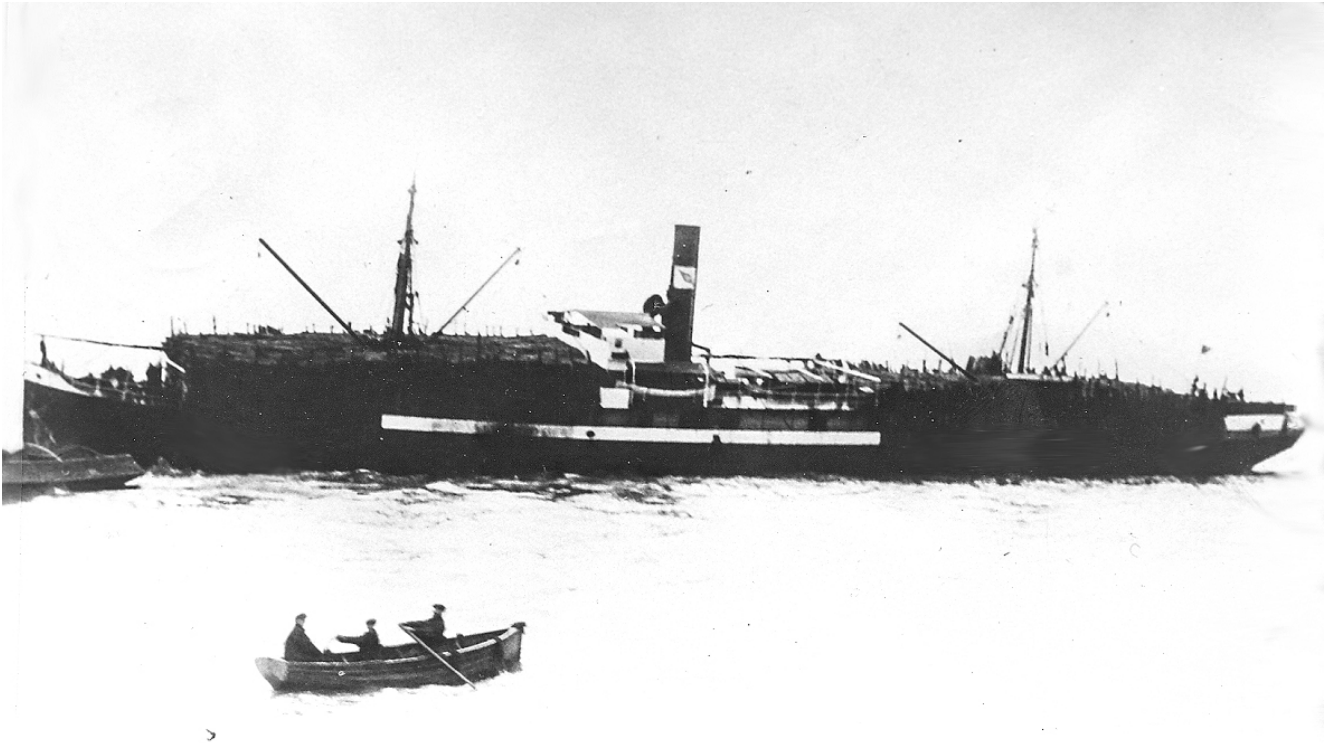
# Lastfartyget S/S Nord (nr 90, 1906)

s.s Nord. Gick på grund utanför Tasmanien och sjönk 8 november 1915.

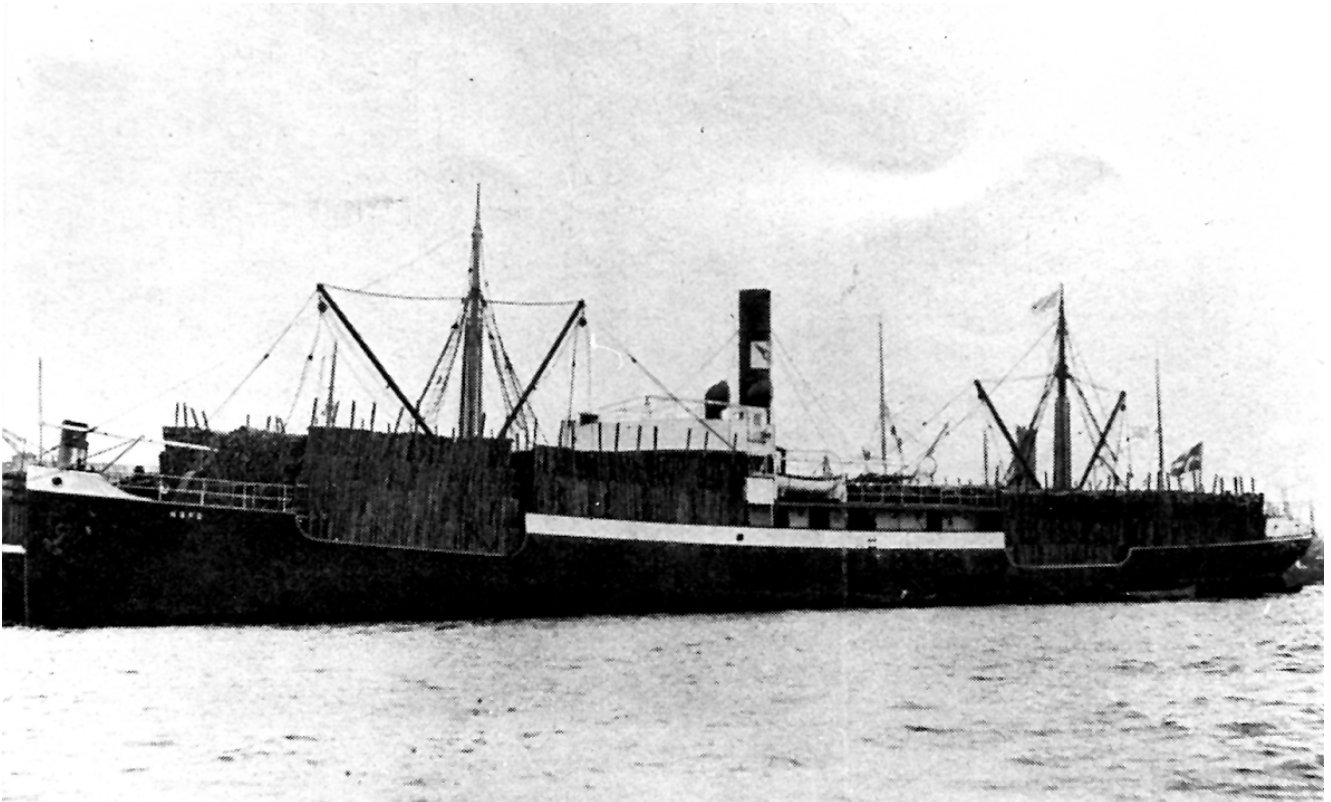
(troligen rätt "Nord" - men viss reservation)



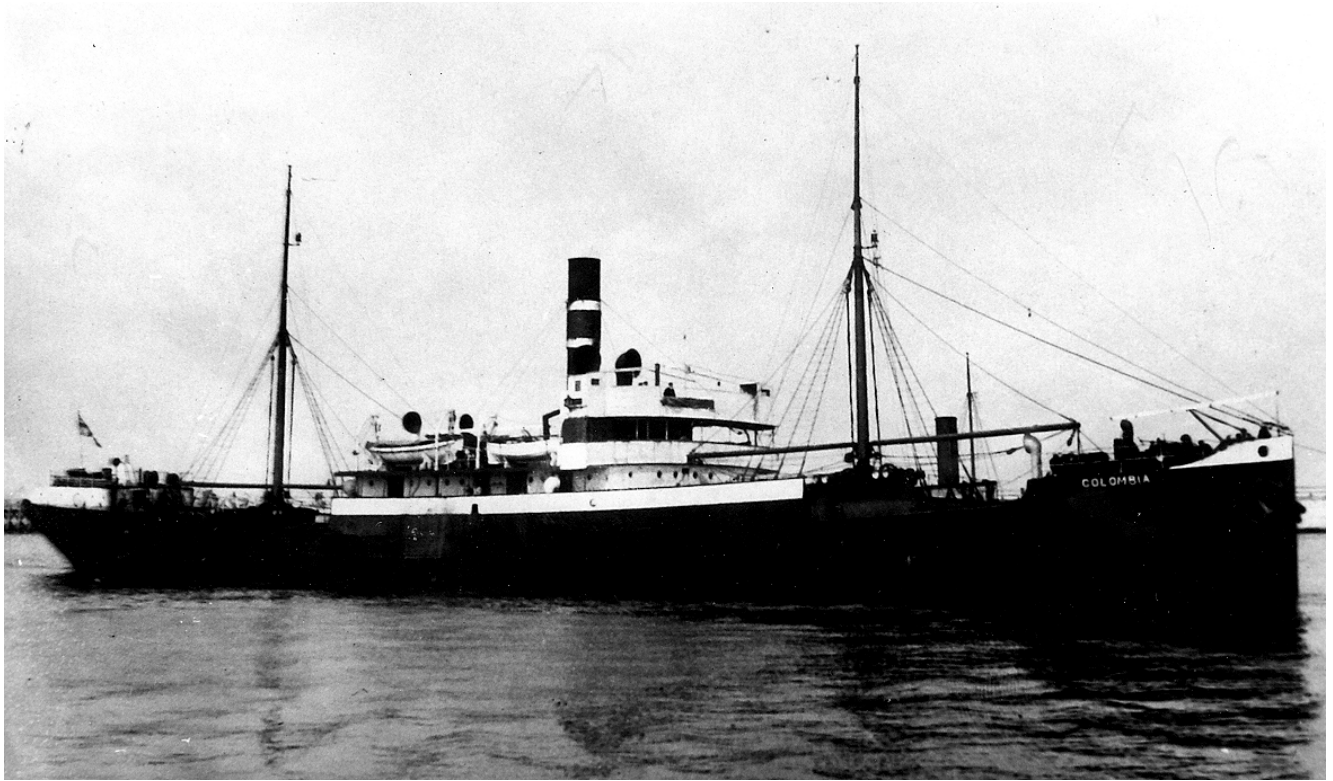
NB 90 Nord sjösättning



NB 90 Nord



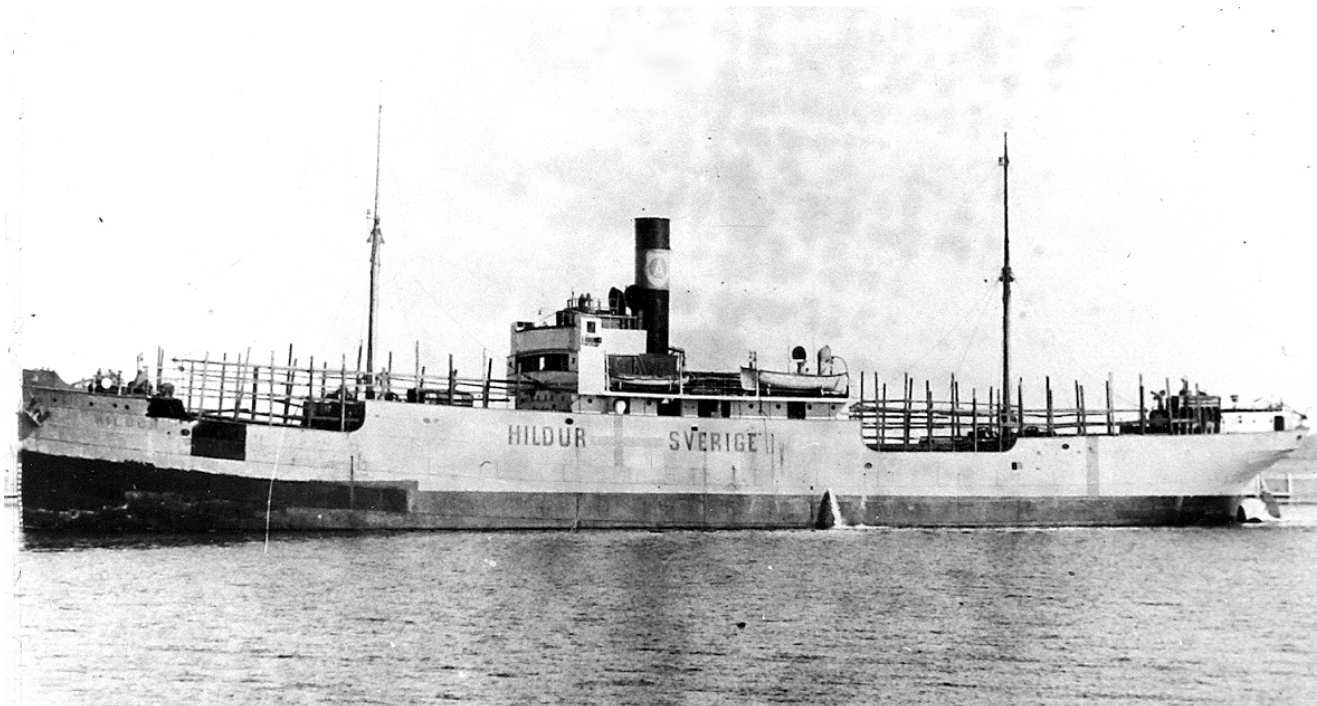
NB 90 Nord (2)



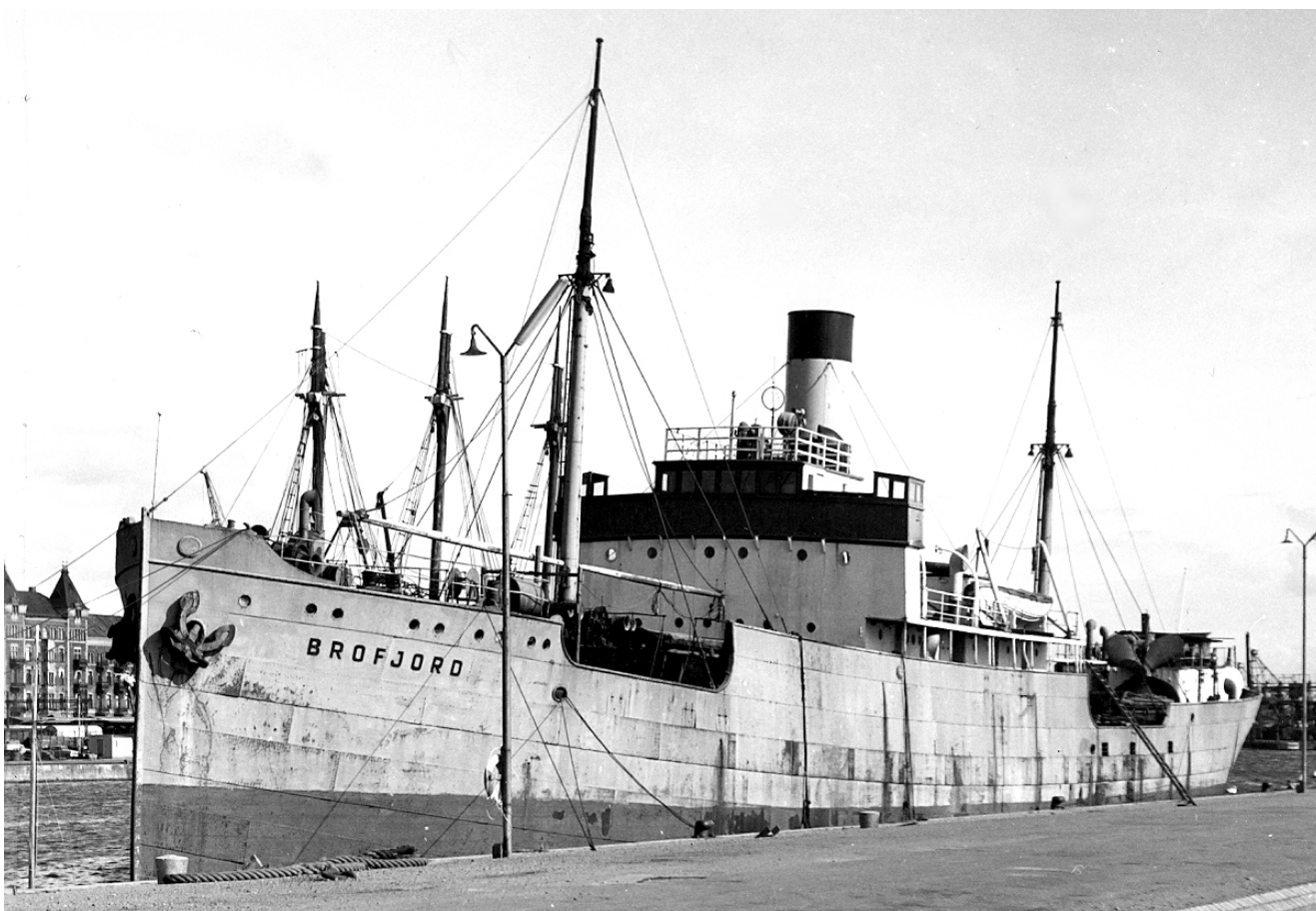
NB 90 Colombia



NB 90 Hildur 1930-talet



NB 90 Hildur under WWII



NB 90 Brofjord i Helsingborg 1960

# Snabba fakta

- Nr: 90
- Art: s.s
- Namn: Nord
- Typ: Lastfart
- Dw ton/Depl ton: 2970 dw
- Levererad 1906
- Beställare: Rederi AB Rex, Stockholm