

Lastfartyget S/S Rimfaxe (nr 133, 1921)

11 personer omkom den 27 april 1941 när Rimfaxe torpederades och sjönk:

Rimfakes SS. Built by Kockums mek. Verkstads A/B, Malmö, Sweden, delivered in March-1921 as Rimfakse to D/S A/S Ringhorn (Albert Schjelderup), Bergen. 235.5' x 37,7' x 16,5', Triple exp. (Kockum), 160 nhp.

Rimfaxe left Blyth on April 20th 1941 with a cargo of 1900 tons coal for Patricksfjord, Iceland, sailing in convoy to Loch Ewe, then departed alone on April 25th 1941. At 01:50 on the 27:th shw was struck in the after part of No.

2 hatch, port side, by a torpedo from U-147, Capt. Eberhard Wetjen had just taken over the command that month, previously commanded by Reinhard Hardegen, position 60 10N 08 54W (about 130 n. miles northwest of Scotland).

From Bjorn Mildo's postcard collection

B.nr 133 Rimfaxe



Rimfaxe SS. Built by Kockums mek. Verkstads A/B, Malmö, Sweden, delivered in March-1921 as Rimfaxe to D/S A/S Ringhorn (Albert Schjelderup), Bergen. 235.5' x 37.7' x 16.5', Triple exp. (Kockum), 160 nhp. Rimfaxe left Blyth on April 20th 1941 with a cargo of 1900 tons coal for Patricksfjord, Iceland, sailing in convoy to Loch Ewe, then departed alone on April 25th 1941. At 01:50 on the 27th she was struck in the after part of No.

2 hatch, port side, by a torpedo from U-147, Capt. Eberhard Wetjen had just taken over the command that month, previously commanded by Reinhard Hardegen, position 60 10N 08 54W (about 130 n. miles northwest of Scotland).

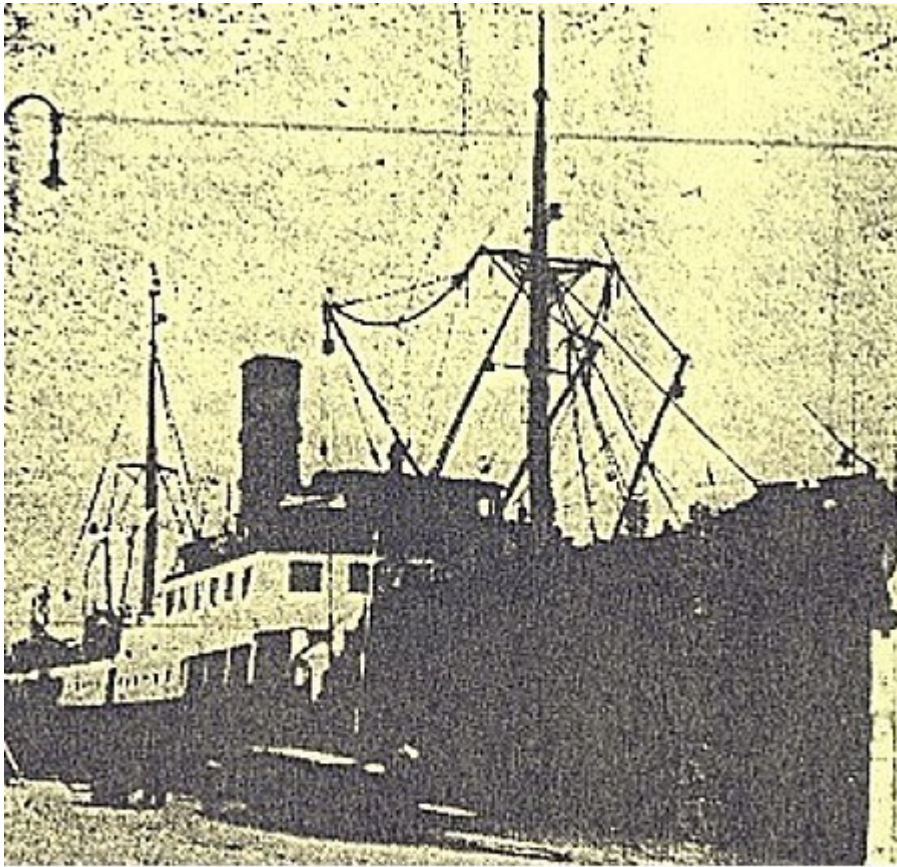
27 april 1941 - 11 omkomna

From Bjorn Mildo's postcard collection.

Snabba fakta

- Nr: 133
 - Art: s.s
 - Namn: Rimfaxe
 - Typ: Lastfart
 - Dw ton/Depl ton: 2220 dw
 - Levererad 1921
 - Effekt Hk/MW 720
 - Beställare: Alb. Schalderup, Bergen
-

Lastfartyget S/S Ryfylke (nr 58, 1891)



"Ryfylke" Ett anna passasjereskipp som tilhørde DSD ligg også på havens botten ved Stadt. Vintere n 1941 var DS "Ryfylke" leigd ut til Nordenfjeldske Dampskibsselskab for fart i Hurtigruta. I kveldinga onsdag 5. februar 1941 vart skipet stoppa og søkkt av ein britisk ubåt i skipsleia ved Kvittnes. Passasjerane og mannskapet vart berga av redningsskøyta "Chr. Bugge". (eventuelt rätt fartyg)

"Ryfylke" Ett annat passagerarskepp som tillhörde DSD ligger också på havets botten vid Stadt. Vintern 1941 var DS "Ryfylke" uthyrt till Nordenfjeldske Dampskibsselskab för Hurtigrutt-trafik. På kvällen onsdagen den 5:e februari 1941 stoppades skeppet av en brittisk ubåt vid Kvittnes. Passagerarna och mannskapet bärgades av räddningsbåten "Chr. Bugge". (eventuellt rätt fartyg)

Snabba fakta

- Nr: 58
 - Art: s.s
 - Namn: Ryfylke
 - Typ: Lastfart
 - Dw ton/Depl ton: 415 depl
 - Levererad 1891
 - Effekt Hk/MW 460
 - Beställare: [Det Stavangerske Dampskibsselskab](#), Stavanger (se även [företagets hemsida](#))
-

Lastfartyget S/S Ermeland (nr 53, 1890)

Namnshistoria:

1. Ermeland 1890 – 1892
2. Frej 1892 – 1915
3. Lindborg 1915 – 10 sept 1916

S/S Lindborg, built by Kockums Mekaniske Verksted, Malmö in 1890 and owned at the time of her loss by J. Ringen, Haugesund, was a Norwegian steamer of 400 tons.

On September 10th, 1916, Lindborg, on a voyage from Rotterdam to London with general cargo, was scuttled by the German submarine UB-6 (Karsten von Heydebreck), 9 miles northwest from the Maas lightvessel. There were no casualties.

Floden Meuse/Maas mynnar ut i Nordsjön i Nederländerna vid Hoek van Holland.

B.Nr 53 "Ermeland" - Inget foto hittat


- men följande uppgifter på internet:

Namn: 1/"Ermeland" 1890 – 1892


2/"Frej" 1892 – 1915

3/"Lindborg" 1915 – 10 sept 1916 (sänkt, se anm)

builder:

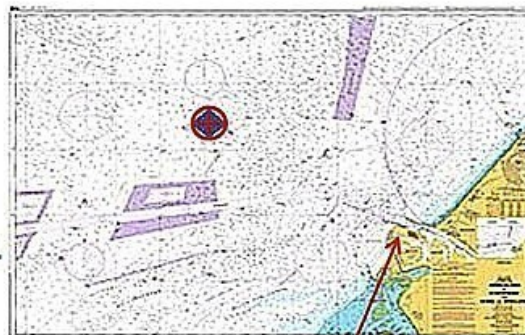
 Kockums Varv (Mek. Verkstad), Malmö

owner:

 Ringens J. Rederi A/S - J. Ringen, Haugesund

SS Lindborg, built by Kockums Mekaniske Verksted, Malmö in 1890 and owned at the time of her loss by J. Ringen, Haugesund, was a Norwegian steamer of 400 tons.

On September 10th, 1916, Lindborg, on a voyage from Rotterdam to London with general cargo, was scuttled by the German submarine UB-6 (Karsten von Heydebreck), 9 miles northwest from the Maas lightvessel. There were no casualties.



Floden Meuse/Maas mynnar ut i Nordsjön i Nederländerna vid Hoek van Holland

Snabba fakta

- Nr: 53
- Art: s.s
- Namn: Ermeland
- Typ: Lastfart
- Dw ton/Depl ton: 477 dw
- Levererad 1890
- Effekt Hk/MW 250
- Beställare: Deutsche Küsten D/S AG, Hamburg

Lastfartyget S/S Ceres (nr

36, 1882)

En artikel från webben om Ceres torpedering 1917:

On July 13th, 1917, the Danish steamer SS Ceres, on a voyage from Fleetwood to Reykjavik with a cargo of salt, was sunk by the German submarine U-88 (Walther Schwieger), 180 miles NW of Inistrahull. 2 persons were killed.


Torpedoed and sunk by U-88, on route from Fleetwood for Reykjavik with salt. Two of her crew were lost.

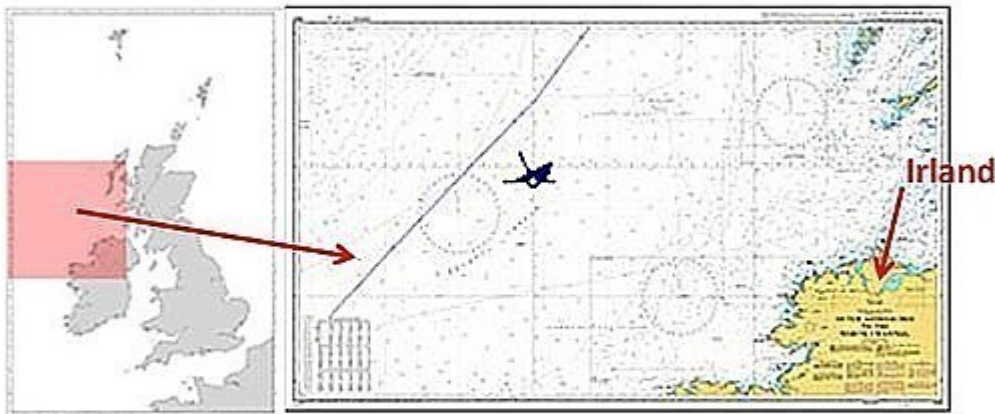
B.nr 36 Ceres.

Vi har inte hittat något foto på s.s Ceres

Däremot en artikel på webben om Ceres' torpedering 1917.

builder:

 Kockums Varv (Mek. Verkstad), Malmö



On July 13th, 1917, the Danish steamer SS Ceres, on a voyage from Fleetwood to Reykjavik with a cargo of salt, was sunk by the German submarine U-88 (Walther Schwieger), 180 miles NW of Inistrahull. 2 persons were killed.

Torpedoed and sunk by U-88, on route from Fleetwood for Reykjavik with salt. Two of her crew were lost.

Snabba fakta

- Nr: 36
- Art: s.s

- Namn: Ceres
- Typ: Lastfart
- Dw ton/Depl ton: 867 dw
- Levererad 1882
- Effekt Hk/MW 1000
- Beställare: Sydsvenska Ångfartyg AB, Malmö