

# Lastfartyget S/S Ceres (nr 36, 1882)

En artikel från webben om Ceres torpedering 1917:

On July 13th, 1917, the Danish steamer SS Ceres, on a voyage from Fleetwood to Reykjavik with a cargo of salt, was sunk by the German submarine U-88 (Walther Schwieger), 180 miles NW of Inistrahull. 2 persons were killed.


Torpedoed and sunk by U-88, on route from Fleetwood for Reykjavik with salt. Two of her crew were lost.

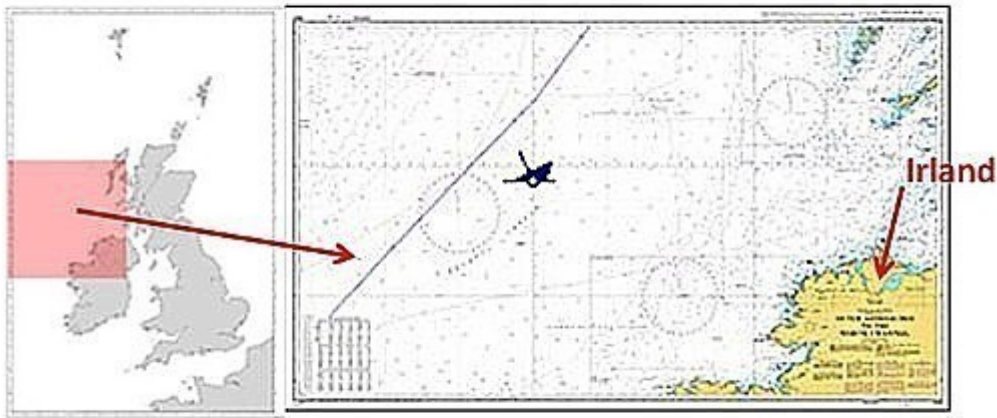
## B.nr 36 Ceres.

Vi har inte hittat något foto på s.s Ceres

Däremot en artikel på webben om Ceres' topedering 1917.

builder:

 Kockums Varv (Mek. Verkstad), Malmö



On July 13th, 1917, the Danish steamer SS Ceres, on a voyage from Fleetwood to Reykjavik with a cargo of salt, was sunk by the German submarine U-88 (Walther Schwieger), 180 miles NW of Inistrahull. 2 persons were killed.

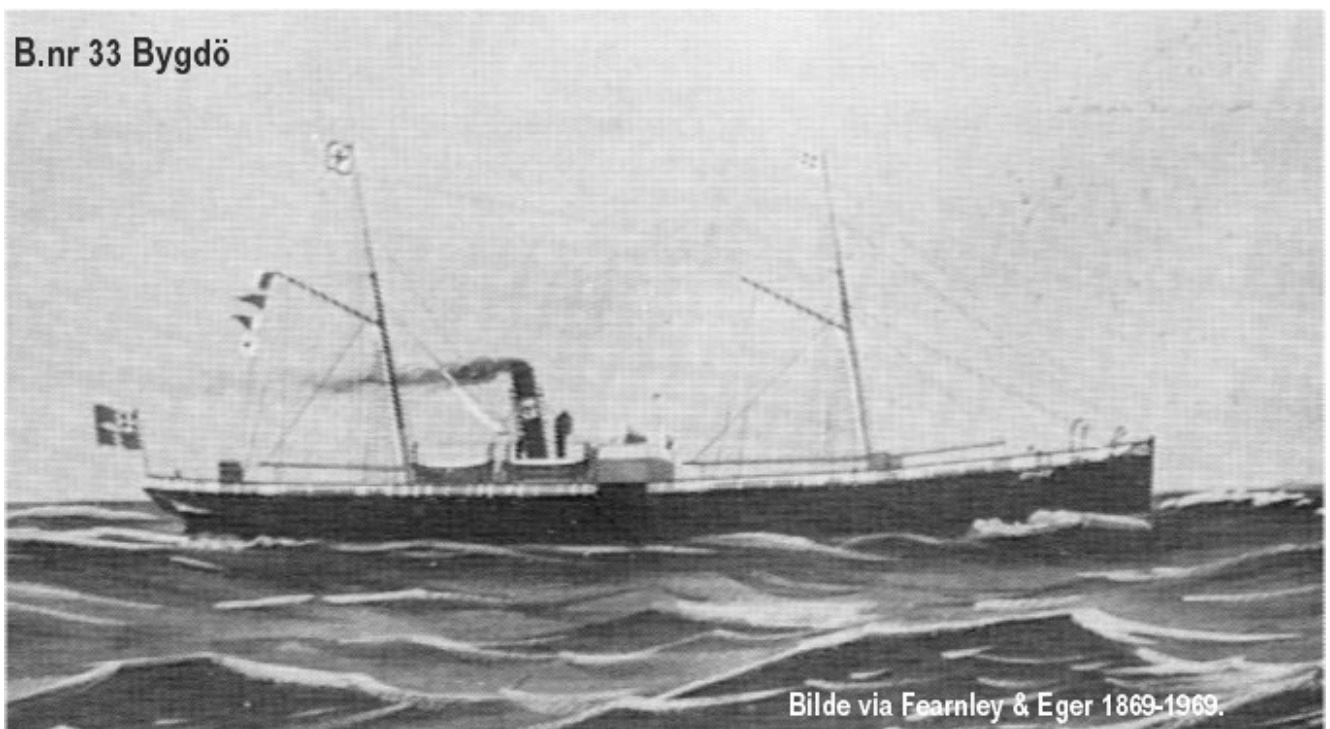
Torpedoed and sunk by U-88, on route from Fleetwood for Reykjavik with salt. Two of her crew were lost.

# Snabba fakta

- Nr: 36
- Art: s.s
- Namn: Ceres
- Typ: Lastfart
- Dw ton/Depl ton: 867 dw
- Levererad 1882
- Effekt Hk/MW 1000
- Beställare: Sydsvenska Ångfartyg AB, Malmö

---

## Lastfartyget S/S Bygdö (nr 33, 1882)



Bilde via Fearnley & Eger 1869-1969.

# Snabba fakta

- Nr: 33
- Art: s.s
- Namn: Bygdö
- Typ: Lastfart
- Dw ton/Depl ton: 1095 dw
- Levererad 1882
- Effekt Hk/MW 100
- Beställare: Kristiania D/S, Kristiania

## Lastfartyget S/S Oslo (nr 32, 1882)

B.nr 32 Oslo – ingen bild, men hittad på en polsk internetsida

Parowce norweskie, które w latach 1894–1900 zawinęły do Szczecina i Gdańska (w kolejności wg roku budowy)/ Norwegian steamers, that entered the ports of Stettin and Danzig, 1894–1900 (in order of the year of construction)					
* material: żelazo – iron, drewno – wood, kompozyt – composite, stal - steel					
Nazwa jednostki/ Name of the ship	Kapitan/ Captaine	Material/ Material*	NRT	Rok budowy/ Year of the constr.	Miejsce budowy/ Place of the construction
"OSLO"	Wettergreen E.☐	żelazo	1240	1882	Malmo
Stocznia/ Shipyard		Armator/ The ship owner		Port macierzysty/ The home port	
Kockums Mek.Vst AB		Xania DS - Fearnley&Eger		Chrystiania	

Från [en polsk internetsida](#):

Norwegian steamers, that entered the ports of Stettin and Danzig, 1894-1900 (in order of the year of Construction)

- Name of ship: Oslo
- Captain: Wettergren E.
- Material: zelazo
- NRT: 1240
- Year of the construction: 1882
- Place of the construction: Malmö
- Shipyard: Kockums Mek. Vst AB
- The ship owner: Xania DS – Fearnley & Eger
- The home port: Chrystiania

## **Snabba fakta**

- Nr: 32
- Art: s.s
- Namn: Oslo
- Typ: Lastfart
- Dw ton/Depl ton: 1132 dw
- Levererad 1882
- Effekt Hk/MW 100
- Beställare: Kristiania D/S, Kristiania

---

**Lastfartyget S/S Kong Ring  
(nr 31, 1882)**



## Snabba fakta

- Nr: 31
- Art: s.s
- Namn: Kong Ring
- Typ: Lastfart
- Dw ton/Depl ton: 1812 depl
- Levererad 1882
- Effekt Hk/MW 150
- Beställare: Söndenfelds D/S, Kristiania

---

## Lastfartyget S/S Kronen (nr

# 30, 1882)

## B.nr 30 Kronen

fra 1882. Overgået til DFDS i 1887.



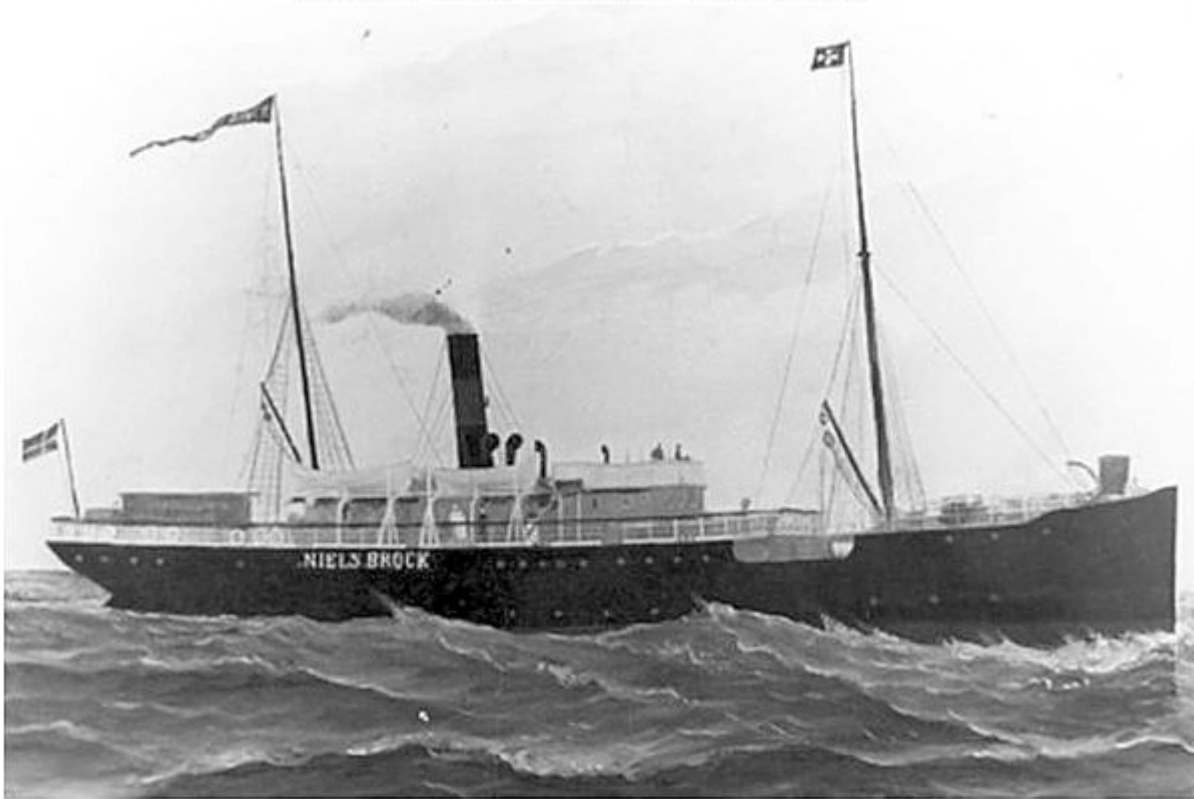
Overgået til DFDS i 1887.

## Snabba fakta

- Nr: 30
  - Art: s.s
  - Namn: Kronen
  - Typ: Lastfart
  - Dw ton/Depl ton: 435 dw
  - Levererad 1882
  - Effekt Hk/MW 95
  - Beställare: Det Falster-Sjællandske Dampskibsselskab
-

# Passagerarfartyget S/S Niels Brock (nr 29, 1882)

## B.Nr 29 Niels Brock



## Snabba fakta

- Nr: 29
- Art: s.s
- Namn: Niels Brock
- Typ: Pass.fart
- Dw ton/Depl ton: 695 depl
- Levererad 1882
- Effekt Hk/MW 100
- Beställare: Det Forenede D/S, Köbenhavn

---

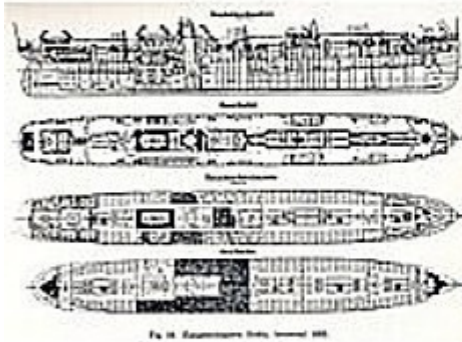
# Lastfartyget S/S Hekla (nr 28, 1882)

Thingvalla Line steamship departing with emigrants from Larsens Plads, Copenhagen 1882. The Hekla was named after the well known mount Hekla at Island. The mountain has had an Active volcano for centuries. She had a straight stem, one funnel, Three masts, iron Construction.

There was a single screw and she had a service speed of 11 knots. She had passenger accomodation for 12 first class, 16 second class and 600 third class (steerage) passengers. On Feb 13, 1883, she departed Copenhagen for New York. She called at Christiania on the 14th. This was to be the seventh and last time she sailed for Christiansand and New Yrok. On the 15th she stranded at Sydostgrunnen of Sandefjord in Vestfold. After being afloat for abobut 2 Days she sank on the 17th, much of her cargo, all passengers and crew were rescued.



## Hekla



Thingvalla Line steamship departing with emigrants from Larsens Plads, Copenhagen 1882. The Hekla (1) was named after the well known mount Hekla at Island. The mountain has had an active volcano for centuries. She had a straight stem, one funnel, three masts, iron construction. There was a single screw and she had a service speed of 11 knots. She had passenger accommodation for 12 first class- 16 second class and 600 third class (steerage) passengers. On Feb 13, 1883, she departed Copenhagen for New York. She called at Christiania on the 14th. This was to be the seventh and last time she sailed for Christiansand and New York. On the 15th she stranded at Sydostgrunnen off Sandefjord in Vestfold. After being afloat for about 2 days she sank on the 17th, much of her cargo, all passengers and crew were rescued.

B.nr 28 Hekla (emigrant fartyg)

# Snabba fakta

- Nr: 28
- Art: s.s
- Namn: Hekla
- Typ: Lastfart Dw ton/Depl ton: 2740 dw
- Levererad 1882
- Effekt Hk/MW 2500
- Beställare: Det Forenede D/S, Thingvalla, Köbenhavn