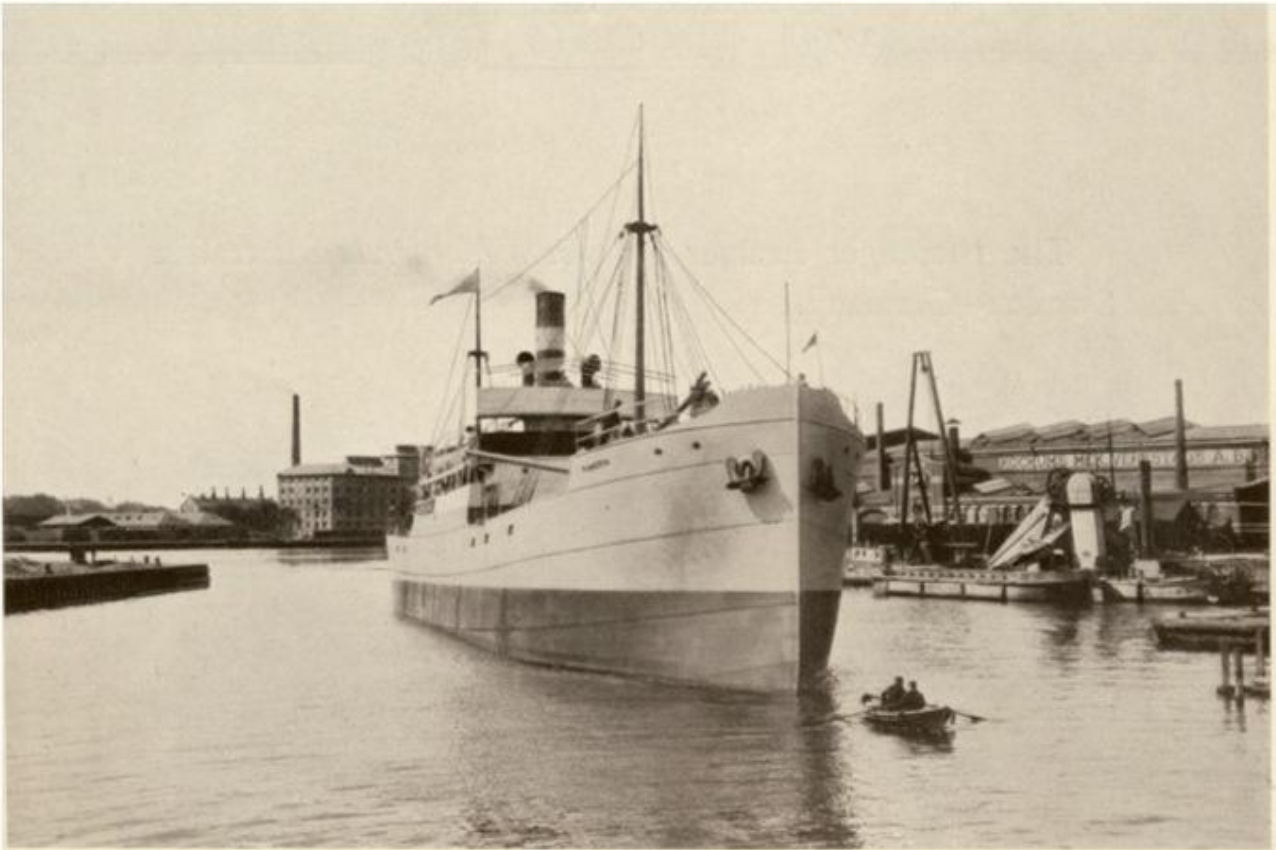


**Lastfartyget S/S Avesta (nr
114, 1913)**

The illustration shows one of the steam-cargo-ships of 2200 tons d. w., built by us.

This ship is equipped with Triple-Expansion Engines 800 I. H. P. of our own make.

Kommentar: Fart. b.nr 114, S/S Avesta, Lastfartyg – ca 2200 dw
Levererat 1913 till Red. AB Nordstjernen, Stockholm.
Lägg märke till Hamnroddarna / BoN



Kockums: "The illustration shows one of the steam-cargo-ships of 2200 tons d. w., built by us. This ship is equipped with Triple-Expansion Engines 800 I.H.P. of our own make."

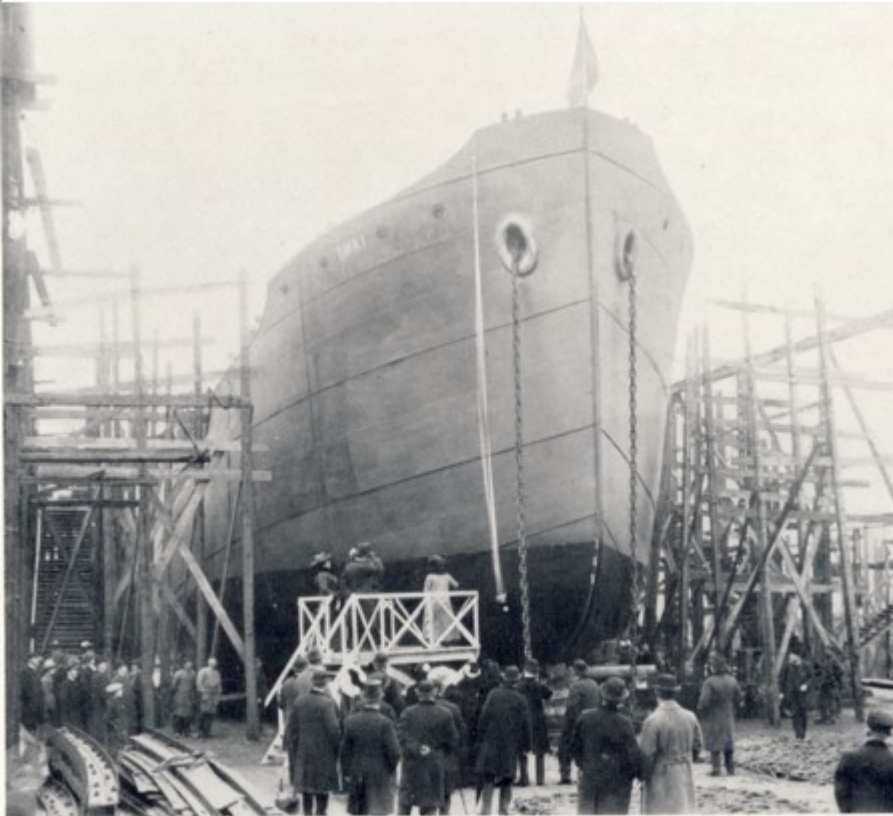
Lägg märke till hamnroddarna.

Snabba fakta

- Nr: 114
- Art: s.s
- Namn: Avesta
- Typ: Lastfart
- Dw ton/Depl ton: 2183 dw
- Levererad 1913
- Fart Knop 9
- Effekt Hk/MW 720
- Beställare: Rederi AB Nordstjernan, Stockholm

Lastfartyget S/S Thai (nr 109, 1913)

Significant, too, of a new age and methods was the launching in 1913 of the *Thai*, 2.230 tons dw, Kockums' first standard ship.



Significant, too, of a new age and methods was the launching in 1913 of the **Thai**, 2.230 tons dw, Kockums' first standard ship.

Snabba fakta

- Nr: 109
- Art: s.s
- Namn: Thai
- Typ: Lastfart
- Dw ton/Depl ton: 2232 dw
- Levererad 1913
- Effekt Hk/MW 720
- Beställare: Rederi AB Nordstjernan, Stockholm